

Worklist: 1921

<u>LAB CASE</u>	<u>ITEM</u>	<u>TASK ID</u>	<u>DESCRIPTION</u>
C2017-1930	1	96117	AM 3 Urine Carboxy-THC
C2017-1943	1	96118	AM 3 Urine Carboxy-THC
M2017-4093	4	96119	AM 3 Urine Carboxy-THC
M2017-4351	3	96120	AM 3 Urine Carboxy-THC



A handwritten signature in black ink, located in the bottom right corner of the page.

Area Percent Report

Data Path : D:\DATA\2017\92817 Urine\
 Data File : 02401004.D
 Acq On : 28 Sep 2017 09:31
 Operator :
 Sample : BRC3 External Control
 Misc : Lot # 68440; AM# 3 worklist 1921
 ALS Vial : 24 Sample Multiplier: 1

Integration Parameters: autoint1.e
 Integrator: ChemStation

Method : D:\DATA\2017\91917 AM3 Worklist 1898\02401041.D\cthc 101415.M
 Title :

Signal : EIC Ion 371.00 (370.70 to 371.70): 02401004.D\data.ms

peak #	R.T. min	first scan	max scan	last scan	PK TY	peak height	corr. area	corr. % max.	% of total
1	4.633	77	84	100	VB	46194	772912	100.00%	100.000%

Sum of corrected areas: 772912

Signal : EIC Ion 473.00 (472.70 to 473.70): 02401004.D\data.ms

peak #	R.T. min	first scan	max scan	last scan	PK TY	peak height	corr. area	corr. % max.	% of total
1	4.635	72	84	103	BB 2	21254	365580	100.00%	91.066%
2	5.096	154	170	172	BB 2	3275	35866	9.81%	8.934%

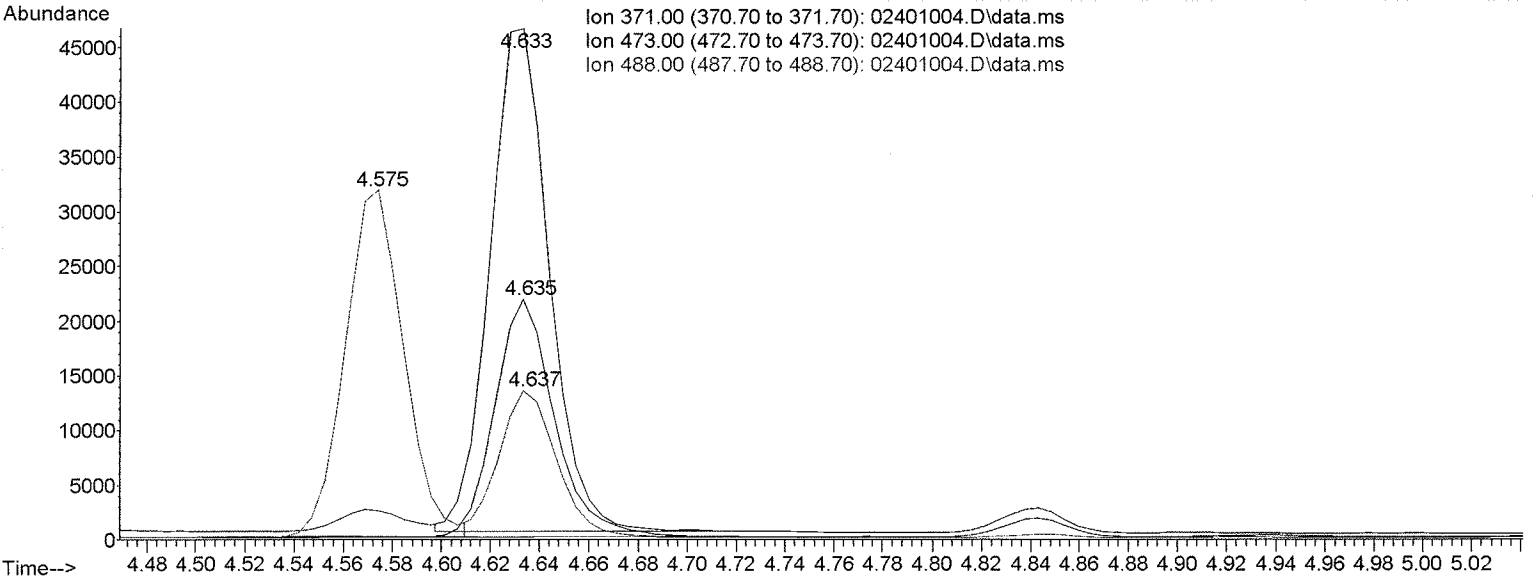
Sum of corrected areas: 401447

Signal : EIC Ion 488.00 (487.70 to 488.70): 02401004.D\data.ms

peak #	R.T. min	first scan	max scan	last scan	PK TY	peak height	corr. area	corr. % max.	% of total
1	4.575	64	73	79	BV	31601	520451	100.00%	70.120%
2	4.637	79	85	99	VB	13163	221777	42.61%	29.880%

Sum of corrected areas: 742229

cthc 101415.M Thu Sep 28 10:56:12 2017



[Handwritten signature]

2.4.4 Carboxy-THC QC Calculations

Run Date: **9/28/2017**

Case Calculations:

Lab Case #: **BRC3-68440**

EIC Ion 371 Corr. Area:	772912	473:371 Ratio:	0.473
EIC Ion 473 Corr. Area:	365580	488:371 Ratio:	0.287
EIC Ion 488 Corr. Area:	221777		

Quality Control Calculations:

Retention Time acceptable range: **4.538** to **4.734**

	<i>1st ctrl</i>	<i>2nd ctrl</i>
EIC Ion 371 Corr. Area:	3740473	4133434
EIC Ion 473 Corr. Area:	1724181	1906586
EIC Ion 488 Corr. Area:	1070358	1184661

Approximate minimum corrected area of 371 ion: ~ **748095**

Ratio of 473:371			
<i>1st ctrl</i>	0.461	<i>2nd ctrl</i>	0.461
		avg.	0.461

Accepted Range (+/- 20%) **0.369 - 0.553**

Ratio of 488:371			
<i>1st ctrl</i>	0.286	<i>2nd ctrl</i>	0.287
		avg	0.286

Accepted Range (+/- 20%): **0.229 - 0.344**

Carboxy-calculation sheet
Revision 0 effective date 10/23/13
Issuing authority: Quality Manager

Area Percent Report

Data Path : D:\DATA\2017\92817 Urine\
 Data File : 02301003.D
 Acq On : 28 Sep 2017 09:22
 Operator :
 Sample : Negative C-THC Control
 Misc : Negative lot 91917: AM# 3 worklist 1921
 ALS Vial : 23 Sample Multiplier: 1

Integration Parameters: autoint1.e
 Integrator: ChemStation

Method : D:\DATA\2017\91917 AM3 Worklist 1898\02401041.D\cthc 101415.M
 Title :

Signal : EIC Ion 371.00 (370.70 to 371.70): 02301003.D\data.ms

peak #	R.T. min	first scan	max scan	last scan	PK TY	peak height	corr. area	corr. % max.	% of total
1	4.574	66	73	79	PV	3559	61131	100.00%	100.000%

Sum of corrected areas: 61131

Signal : EIC Ion 473.00 (472.70 to 473.70): 02301003.D\data.ms

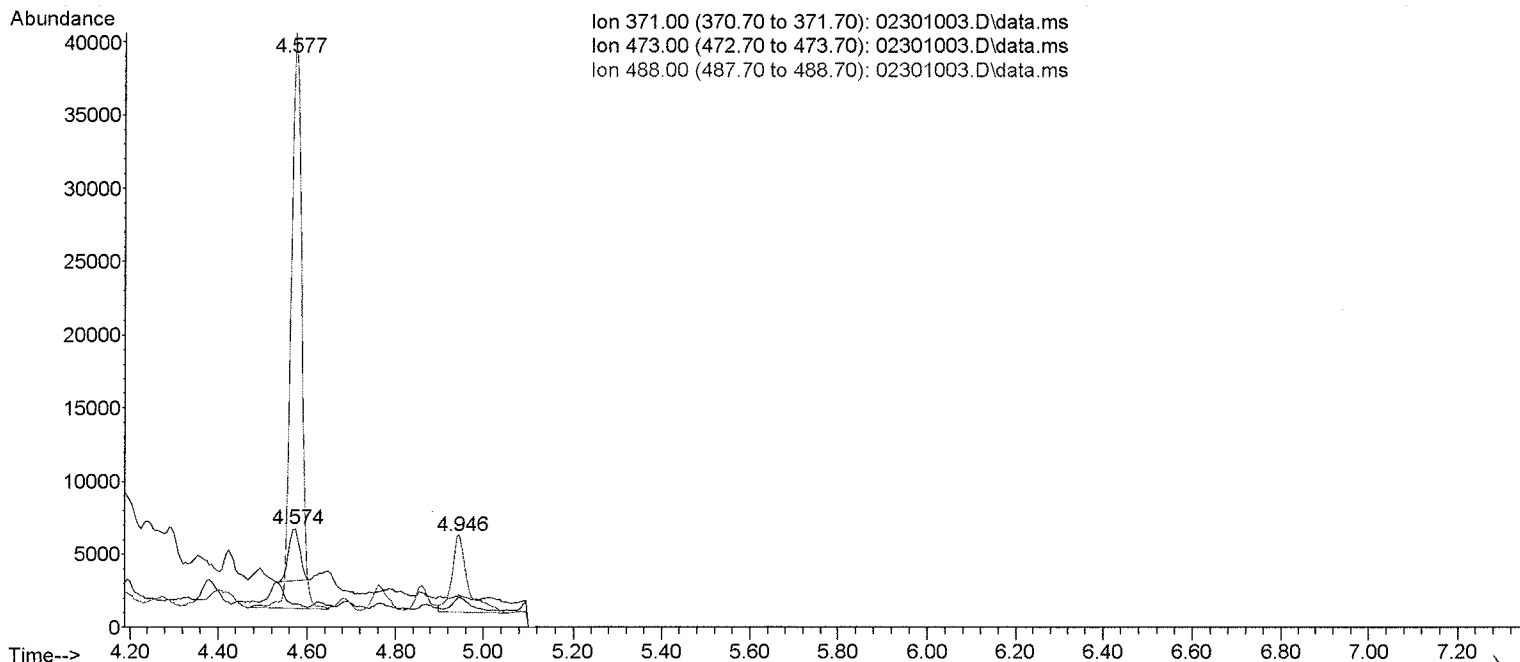
peak #	R.T. min	first scan	max scan	last scan	PK TY	peak height	corr. area	corr. % max.	% of total
No peaks were detected using the method integration parameters!									

No peaks were detected using the method integration parameters!
 Signal : EIC Ion 488.00 (487.70 to 488.70): 02301003.D\data.ms

peak #	R.T. min	first scan	max scan	last scan	PK TY	peak height	corr. area	corr. % max.	% of total
1	4.577	54	74	87	PV	38634	640306	100.00%	82.531%
2	4.946	133	142	163	VV	5263	135535	21.17%	17.469%

Sum of corrected areas: 775841

cthc 101415.M Thu Sep 28 10:55:51 2017



[Handwritten signature]

Area Percent Report

Data Path : D:\DATA\2017\92817 Urine\
 Data File : 02201013.D
 Acq On : 28 Sep 2017 10:55
 Operator :
 Sample : Positive C-THC Control
 Misc : C-THC lot#FE03121501 in negative lot 91917:AM# 3 Worklist 1921
 ALS Vial : 22 Sample Multiplier: 1

Integration Parameters: autoint1.e
 Integrator: ChemStation

Method : D:\DATA\2017\91917 AM3 Worklist 1898\02401041.D\cthc 101415.M
 Title :

Signal : EIC Ion 371.00 (370.70 to 371.70): 02201013.D\data.ms

peak #	R.T. min	first scan	max scan	last scan	PK TY	peak height	corr. area	corr. % max.	% of total
1	4.572	66	73	77	PV	3809	66446	1.61%	1.582%
2	4.634	77	84	107	VB	246007	4133434	100.00%	98.418%

Sum of corrected areas: 4199880

Signal : EIC Ion 473.00 (472.70 to 473.70): 02201013.D\data.ms

peak #	R.T. min	first scan	max scan	last scan	PK TY	peak height	corr. area	corr. % max.	% of total
1	4.636	76	84	102	PV	113077	1906586	100.00%	100.000%

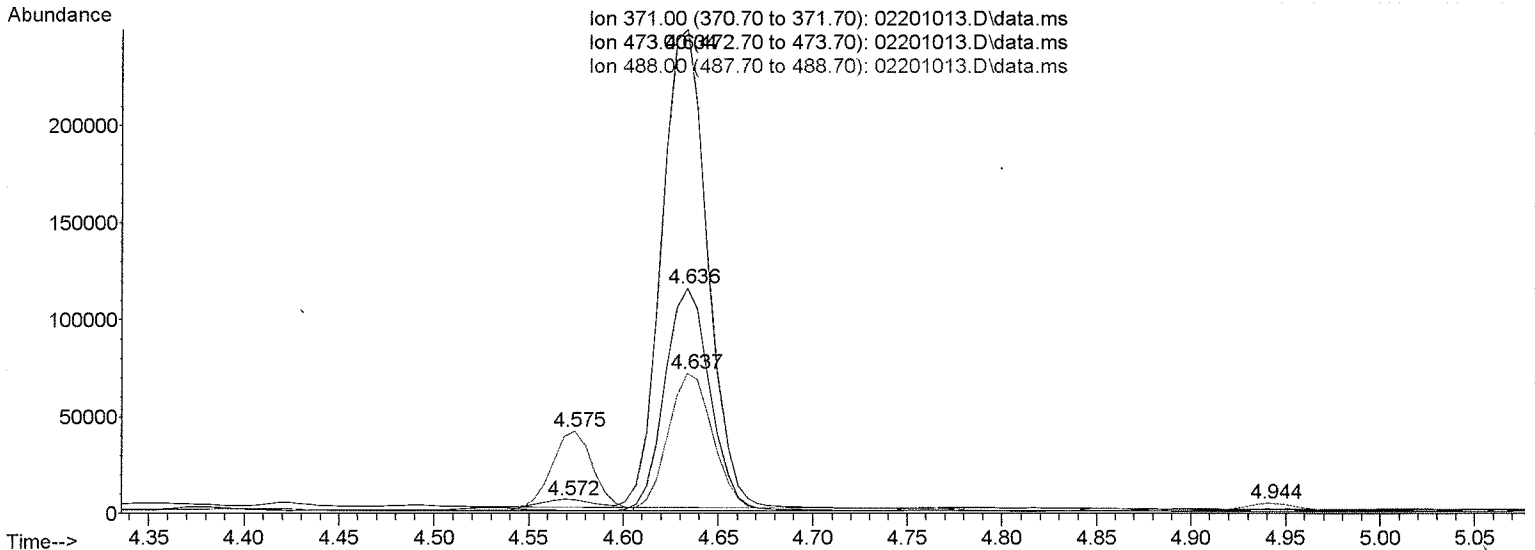
Sum of corrected areas: 1906586

Signal : EIC Ion 488.00 (487.70 to 488.70): 02201013.D\data.ms

peak #	R.T. min	first scan	max scan	last scan	PK TY	peak height	corr. area	corr. % max.	% of total
1	4.575	53	73	79	PV	40512	640392	54.06%	33.252%
2	4.637	79	85	100	VV	70200	1184661	100.00%	61.513%
3	4.944	132	142	163	VV	3946	100822	8.51%	5.235%

Sum of corrected areas: 1925876

cthc 101415.M Thu Sep 28 11:05:48 2017



[Handwritten signature]

Area Percent Report

Data Path : D:\DATA\2017\92817 Urine\
 Data File : 02201002.D
 Acq On : 28 Sep 2017 09:13
 Operator :
 Sample : Positive C-THC Control
 Misc : C-THC lot#FE03121501 in negative lot 91917:AM# 3 Worklist 1921
 ALS Vial : 22 Sample Multiplier: 1

Integration Parameters: autoint1.e
 Integrator: ChemStation

Method : D:\DATA\2017\91917 AM3 Worklist 1898\02401041.D\cthc 101415.M
 Title :

Signal : EIC Ion 371.00 (370.70 to 371.70): 02201002.D\data.ms

peak #	R.T. min	first scan	max scan	last scan	PK TY	peak height	corr. area	corr. % max.	% of total
1	4.576	67	73	78	PV	3845	62494	1.67%	1.643%
2	4.638	78	85	109	VV	238814	3740473	100.00%	98.357%

Sum of corrected areas: 3802966

Signal : EIC Ion 473.00 (472.70 to 473.70): 02201002.D\data.ms

peak #	R.T. min	first scan	max scan	last scan	PK TY	peak height	corr. area	corr. % max.	% of total
1	4.640	77	85	104	PV	110459	1724181	100.00%	100.000%

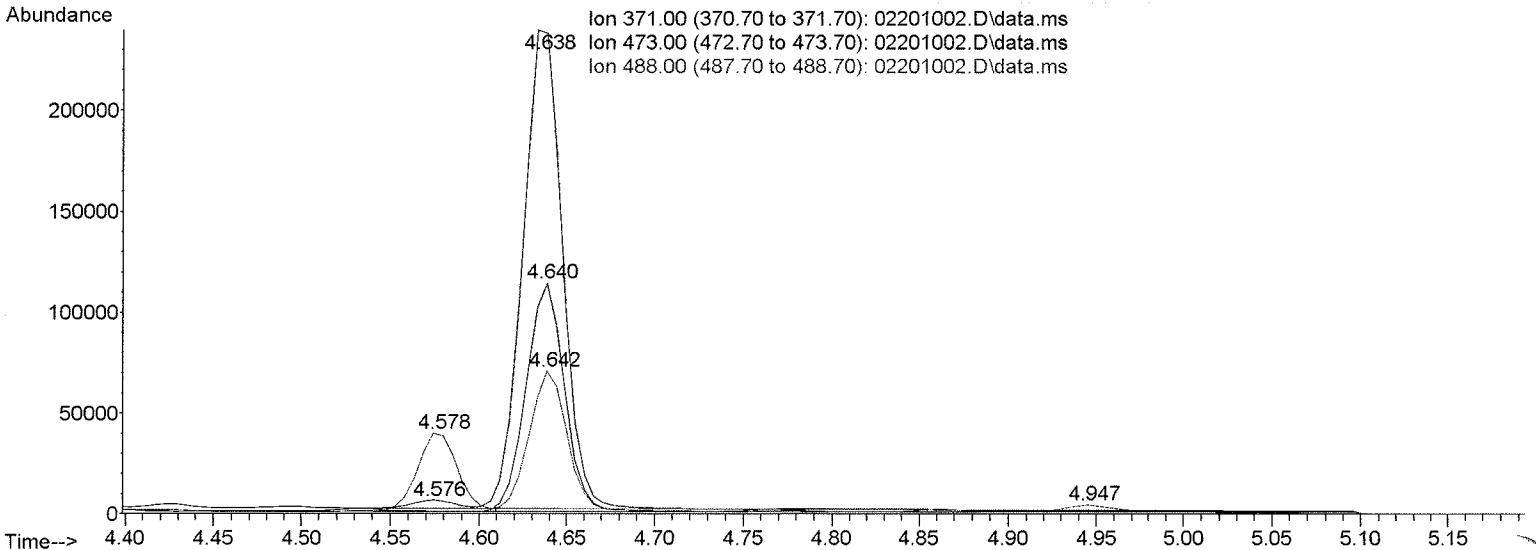
Sum of corrected areas: 1724181

Signal : EIC Ion 488.00 (487.70 to 488.70): 02201002.D\data.ms

peak #	R.T. min	first scan	max scan	last scan	PK TY	peak height	corr. area	corr. % max.	% of total
1	4.578	67	74	80	VV	38748	602837	56.32%	34.119%
2	4.642	80	86	101	VV	67753	1070358	100.00%	60.579%
3	4.947	133	142	164	VV	3504	93675	8.75%	5.302%

Sum of corrected areas: 1766870

cthc 101415.M Thu Sep 28 10:55:25 2017



B